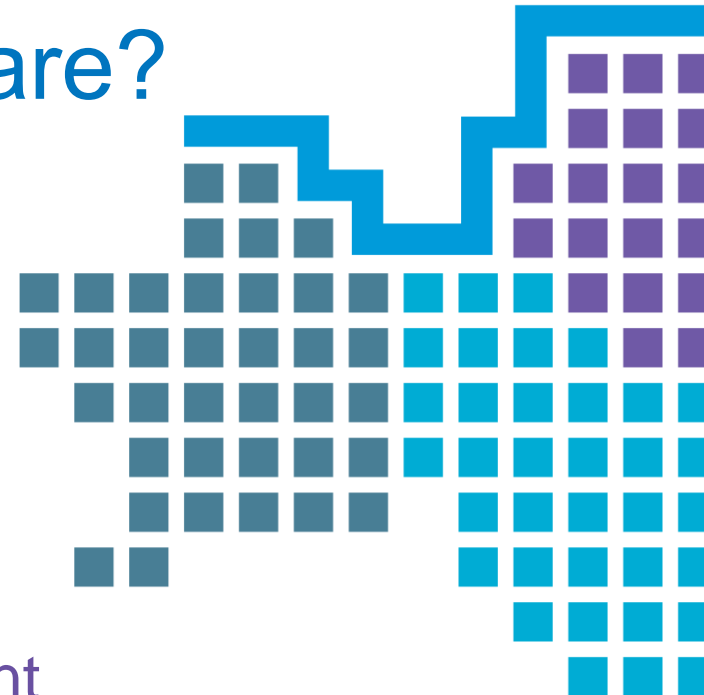


What's new in Primary Care?

- Community Hubs, Commissioning and the Five Year Forward View

Andrew McMylor:
Director for Primary Care Development

2nd March 2016



Background

Primary Care Transformation:

- National drivers for change
- London-wide improvement initiatives
- Local challenges

Out of Hospital Care

- Five Year Strategy
- More care managed in the community
- Reducing pressure on secondary care

Five Year Forward View

- Integrated working to benefit patients
- New models of care proposed:
- Development of community hubs in Wandsworth



What have Patients told us?

Three Key Themes to Improving Care

Improved Access

“ I have a telephone call next week but I had to book that a fortnight ago and that is very, very bad.”

“It’s really difficult to get a GP appointment. If I want to see a GP I have to ring at 8.30am, I rang at 8.30am, there were no appointments. She said ring again on Tuesday morning, no appointments, ring again on Wednesday morning....”

Better Co-ordinated Care

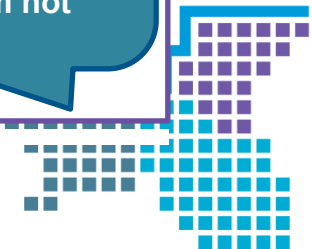
“Having to say it to people over and over again at appointments and things. I shouldn’t have to get upset.”

“The whole process is just overwhelming and if you get understanding people it is such a relief.”

More Pro-active Care

“My GP referred me to the Wellbeing Hub, it was so helpful when I was in need of support.”

“Ringin the GP surgery, but he just says what do you want that for? You’re coping – but everybody’s telling you your not coping, I’m telling you I’m not coping.”



Future Model:

Multispecialty Community Provider (MCP)

Caring for a whole persons needs closer to home:
Local, personalised and responsive.

- Caring for you
- Closer to home
- Community based
- Co-ordinated and
- Connected



The Future Model:

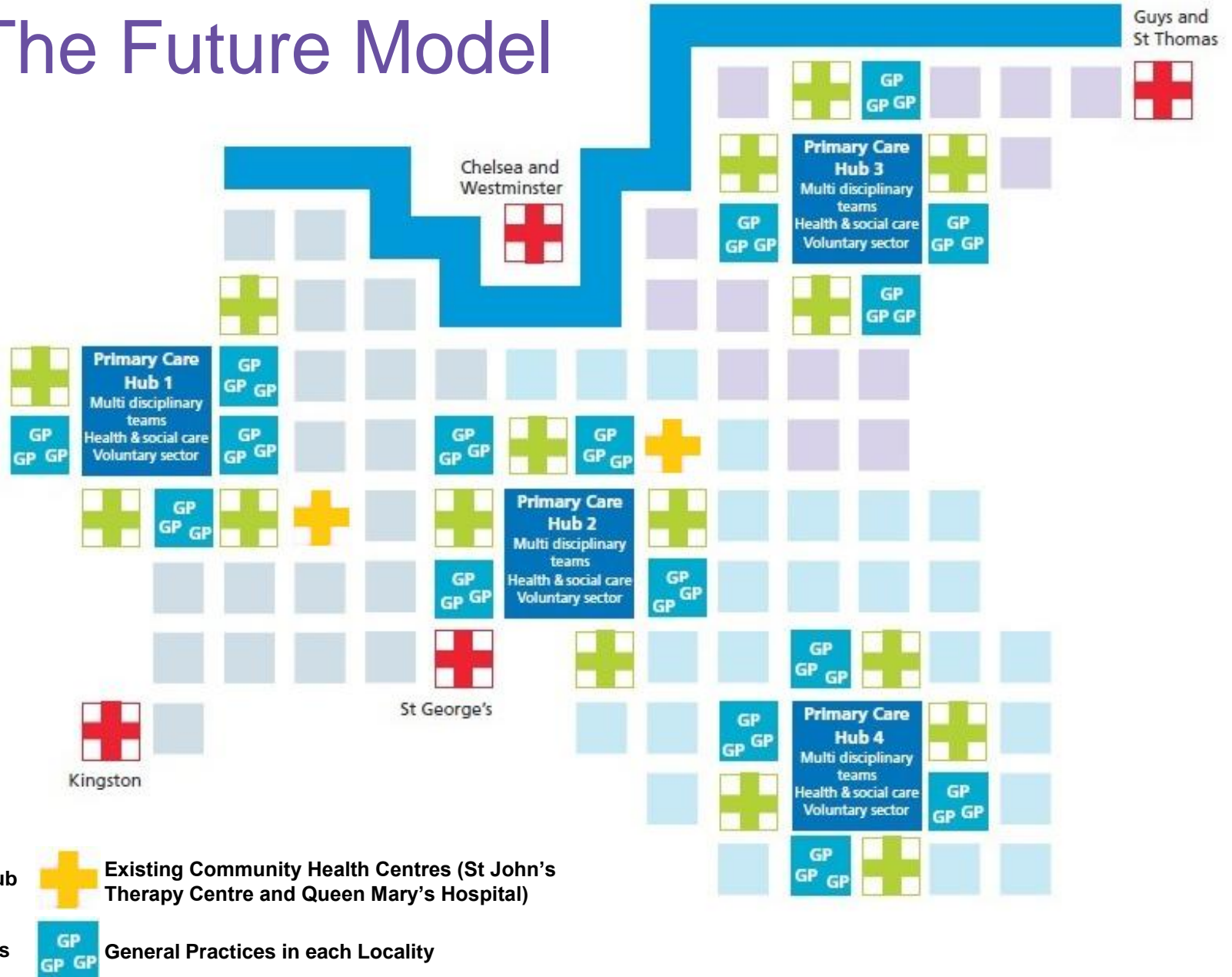
Multispecialty Community Provider (MCP)

- This is how your health and care professionals work together, with you and for you.
- It starts with the care you receive from your GP Practice and is co-ordinated so you get the care you need at home and in the community when you need it.
- A lead provider will ensure that all agencies across health, mental health and social care are connected and co-ordinated to deliver multidisciplinary care.

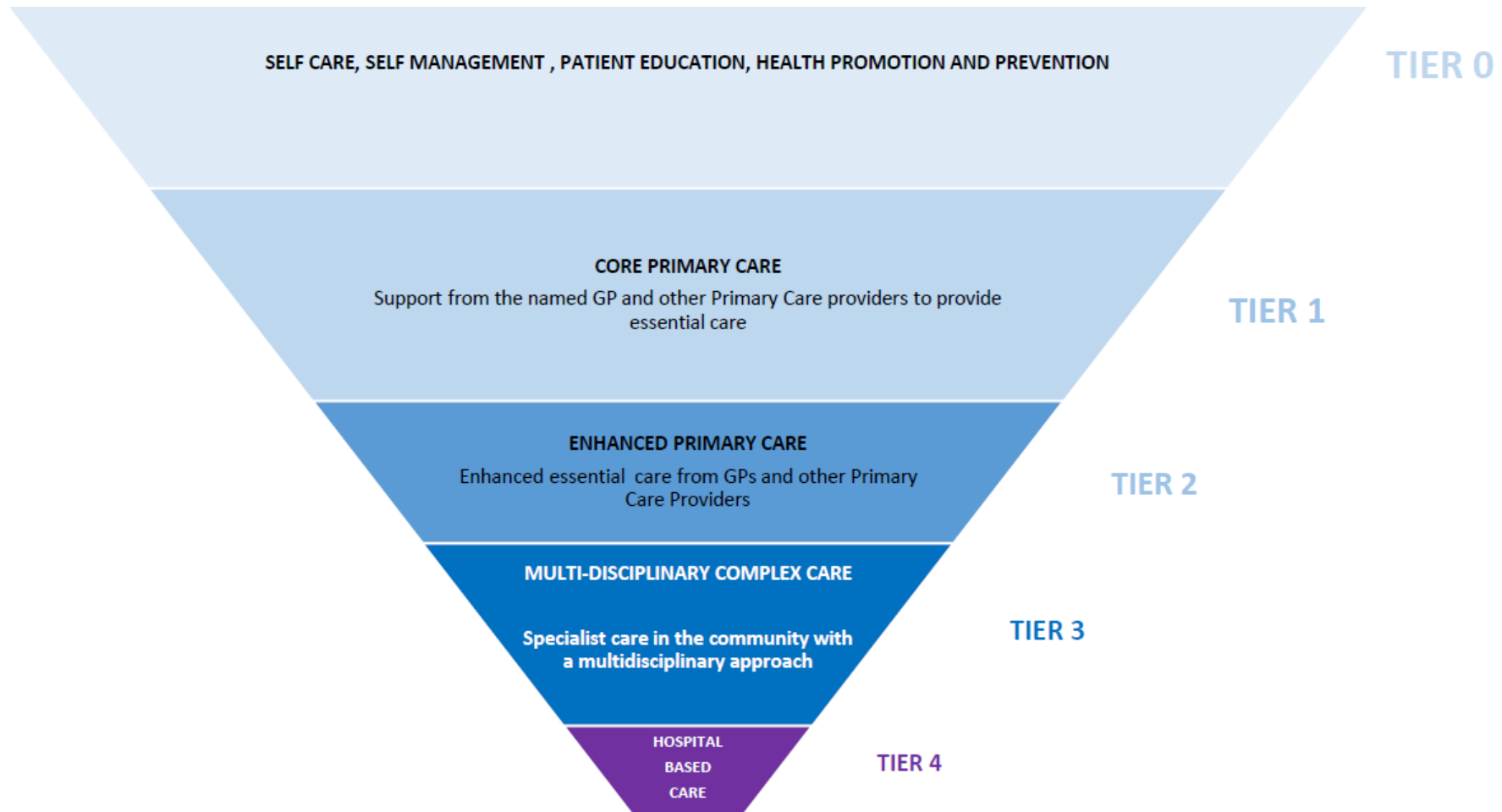
Wandsworth Clinical Commissioning Group



The Future Model



The Future Model



Benefits



Changes to Primary Care Commissioning



‘Co-commissioning will enable CCGs to improve primary care services locally by creating a joined up, clinically-led commissioning systems which delivers seamless, integrated out-of-hospital services based around the needs of local population’

Simon Stevens, May 2014

Wandsworth Clinical Commissioning Group



Different models for Commissioning Primary Care

Co-Commissioning Models

Greater Engagement

CCGs working more collaboratively with NHSE Area Teams around Primary Care

Joint Commissioning

CCGs assume joint responsibility for commissioning primary medical services with the NHSE Area Teams

Fully Delegated Commissioning

Gives CCGs the full responsibility for commissioning primary care services, although NHSE will legally still retain residual liability for primary care commissioning

Concerned that this would leave us at the back of the pack

Right decision for 2015/16

Risk and timeframes precluded this option in 2015/16 but now right for Wandsworth – starting 1st April 16

Wandsworth Clinical Commissioning Group



What is Delegated Commissioning?

Delegated commissioning means that individual CCGs will assume full responsibility for commissioning general practice services and the functions associated with this



Primary Care Medical Functions

GMS, PMS and APMS contracts (including the design of PMS and APMS contracts, monitoring of contracts, taking contractual action such as issuing branch/remedial notices, and removing a contract)

Newly designed enhanced services and designing local incentives schemes as an alternative to QoF

Ability to establish new GP practices in an area

Approving practice mergers

Making decisions on discretionary payments

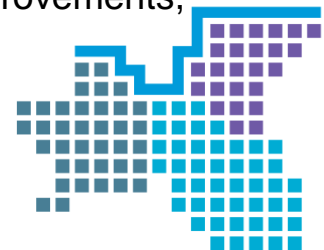


Primary Care Commissioning

Why are we doing it?

- Builds on the good work that we are currently delivering against in Primary Care i.e. PACT
- Enables us to fully implement our plans around the Five Year Forward View, including:
 - Developing an integrated approach with Primary and Community Services as part of our MCP Model
 - Ensures consistency in the delivery of contracts across the borough i.e. addressing inconstancy in the delivery of current contracts
- Benefits our local population by improving primary care access, outcomes, patient experience and supports our work to reduce inequalities
- Increases our ability to tackle quality in primary care; greater knowledge of current Practice performance against contracts = reduce variation in care
- Gives us the ability to design local schemes to replace QoF and DES contracts based on local knowledge
- Supports our effectiveness in transforming healthcare services by enabling us to directly commissioning primary care at a local level
- Gives us greater opportunity to use innovative commissioning to deliver local improvements, whilst optimising the use of resources to target them more effectively

Wandsworth Clinical Commissioning Group



What are the benefits for patients?

Benefits for patients include:

Better co-ordination for care via joined up working

Tailor services to meet local needs of the patient population

Improved Chronic Disease Management

Opening hours and accessibility to primary care

Drive up quality and improve standards

Local patients have more to input and influence



Local Progress

- September agreed to go ahead with our application for Delegated Commissioning
- Submitted application in November – accepted in December
- Understood that there was a known level of risk associated with Delegated Commissioning which was acceptable but that the due diligence exercise would highlight any specific risks
- Decision made at the Feb Board to go forward with Delegated Commissioning
- Establishing a Wandsworth Primary Care Commissioning Committee – meetings will be held in Public
 - Formal body to which NHS England will discharge the Functions
 - HealthWatch representative invited to be a Member

