

CAMHS Local Context

CAMHS Transformation

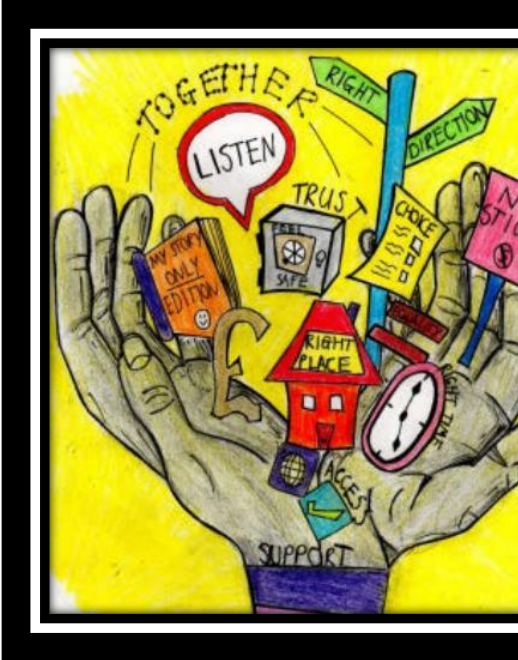
Robert Dyer

Commissioner

robert.dyer@swlondon.nhs.uk



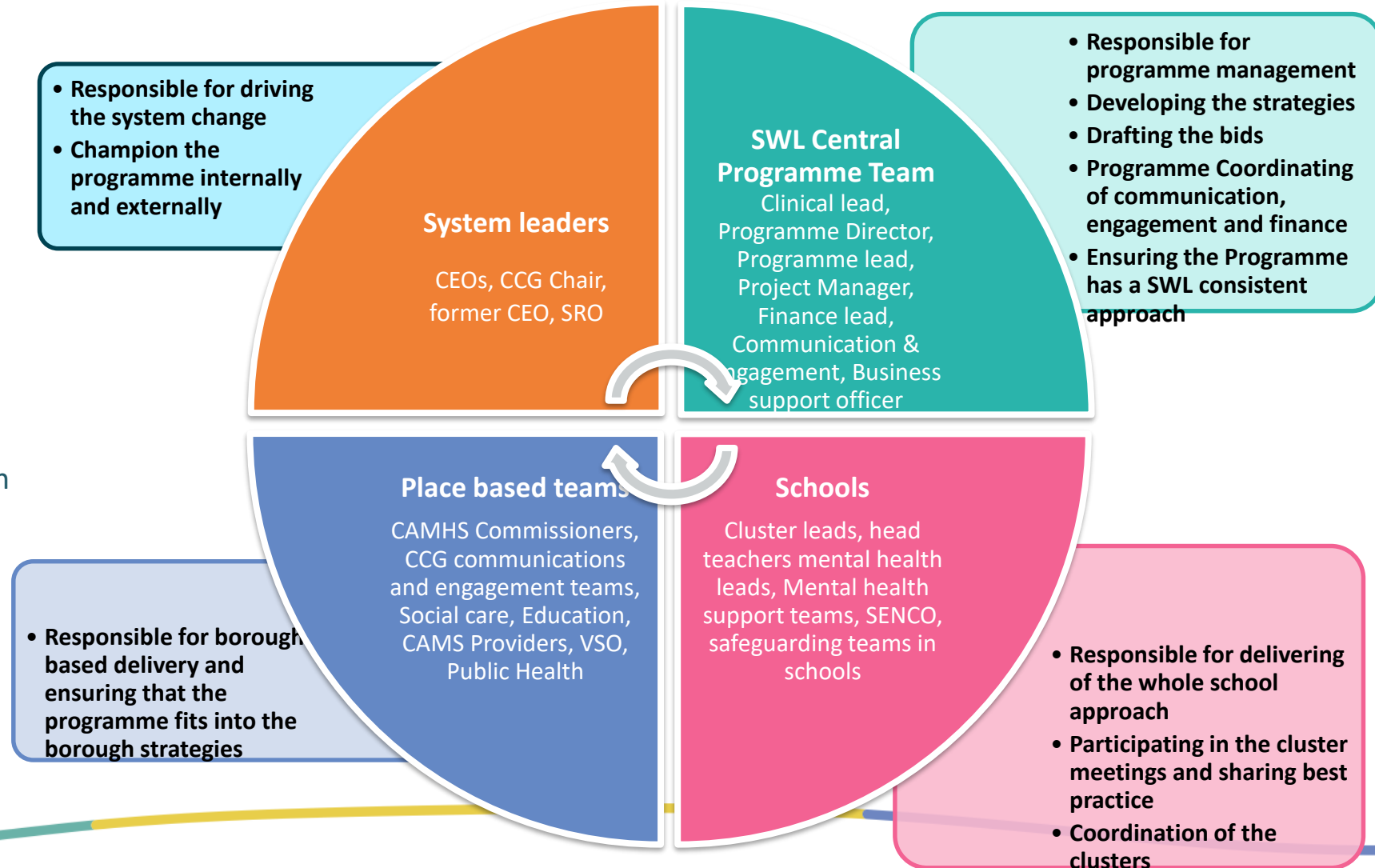
CAMHS - Policy Agenda

- Wandsworth has been driving the transformation, since the publication of the Future In Mind in 2015.
 - Improving the scale, relevance and effectiveness of existing services and creating a range of new services, so that young people receive treatment at the right time, in the right place and delivered in the right way.
- 
- A hand holding various symbols of mental health support and recovery. The hand is open, palm up, and holds several items: a speech bubble saying 'LISTEN', a book titled 'MY FIRST ONLY EDITION', a small house labeled 'RIGHT PLACE', a clock, a sign that says 'NO STIGMA', a sign that says 'TRUST', a sign that says 'RIGHT DIRECTION', a sign that says 'CHOICE', a sign that says 'SAFE', a sign that says 'TOGETHER', a sign that says 'RIGHT', a sign that says 'SUPPORT', and a sign that says 'RIGHT PLACE'. The background is yellow.
- Wandsworth is on target to have increased by 35% the number of young people being assessed and receiving support, by 2020.
 - Over £1m of additional funding is now being spent annually on new CAMHS provision in Wandsworth. Increasing to nearly £3m additional funding in 2020, with a total combined spend of over £7m per year.



Our programme matrix team

- Our programme team is made up of people from different teams and organisations.
- We have been successful because we work as matrix teams across teams and organisational boundaries
- We have invested time and effort in understanding our different organisational cultures and languages
- We have agreed on a common strategy for delivering the whole school approach and pooled CCG funding together with new government funding to deliver the programme
- We have based our programme on the Children and young people voice which has helped us come together and focus on finding the solutions to the issues that matter to our children and young people



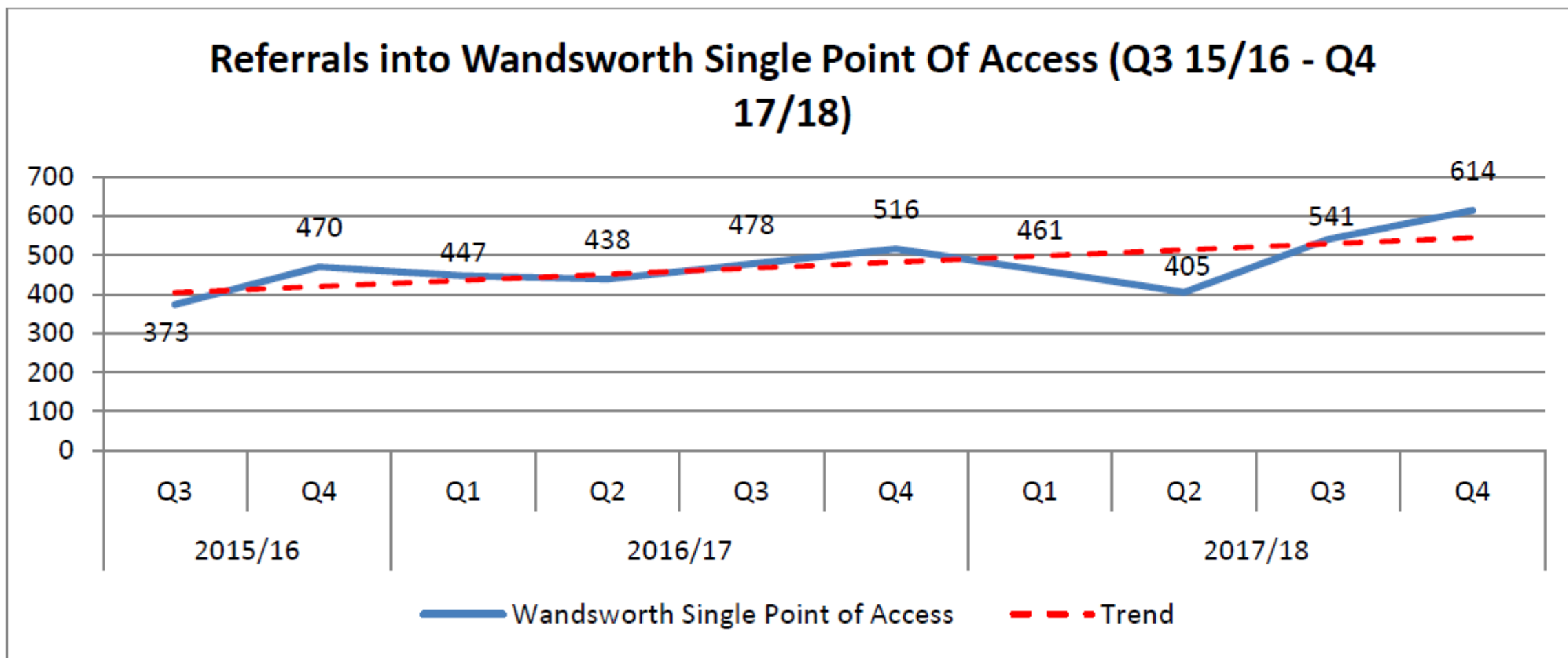
CAMHS LTP Services / Treatment

New services mean that more than 2000 young people now receive treatment, mainly in community settings, including the following services:

- The Single Point of Access (or Access Service), which processes over 2000 referrals annually
- CAMHS Under-5s Extended Service (the only one in South West London)
- Evidenced Based Parenting Programmes for BME parents and fathers
- Place2Be in Primary Schools, Alternative Thinking Strategies (PATHS), Secondary School Therapies, IMPROVED therapies across PRUs and Nightingale
- 24 hour Crisis Care Response, including specialist CAMHS support up until 8.00pm each night and new Early Intervention with Psychosis (EIP)
- Youth Justice Diversion & Liaison clinicians in YOT
- Therapeutic Support for Children Suffering Sexual Abuse on the Edge of Care
- New Spot Purchasing – of Systemic Integrated Therapy for Families
- Improved SEND Local Offer and Effective Local TCP Programme



Performance of Key Services



Single Point of Access Waiting Times

Period of reduced performance in 2017-18

Access Metric	Target	% Achieved	Average Wait
Referral to Triage	24hrs	98.71%	24 hours
Triage to Assessment	14days	31.32%	25.6 days
Triage to Consultancy	14days	63.16%	15 days

Recovered performance in 2018-19

Description	Q1 18/19	Q2 18/19	Q3 18/19
Number of referrals	603	506	675
Referrals to Triage in 24 hrs.	99.80%	99.80%	99.90%
Triage to assessment in 14 days/ Average Wait Days	33.1 days	20.7 days	14 days
Triage to consultancy in 14 days/ Average Wait Days	18.2 days	14.9 days	13.2 days



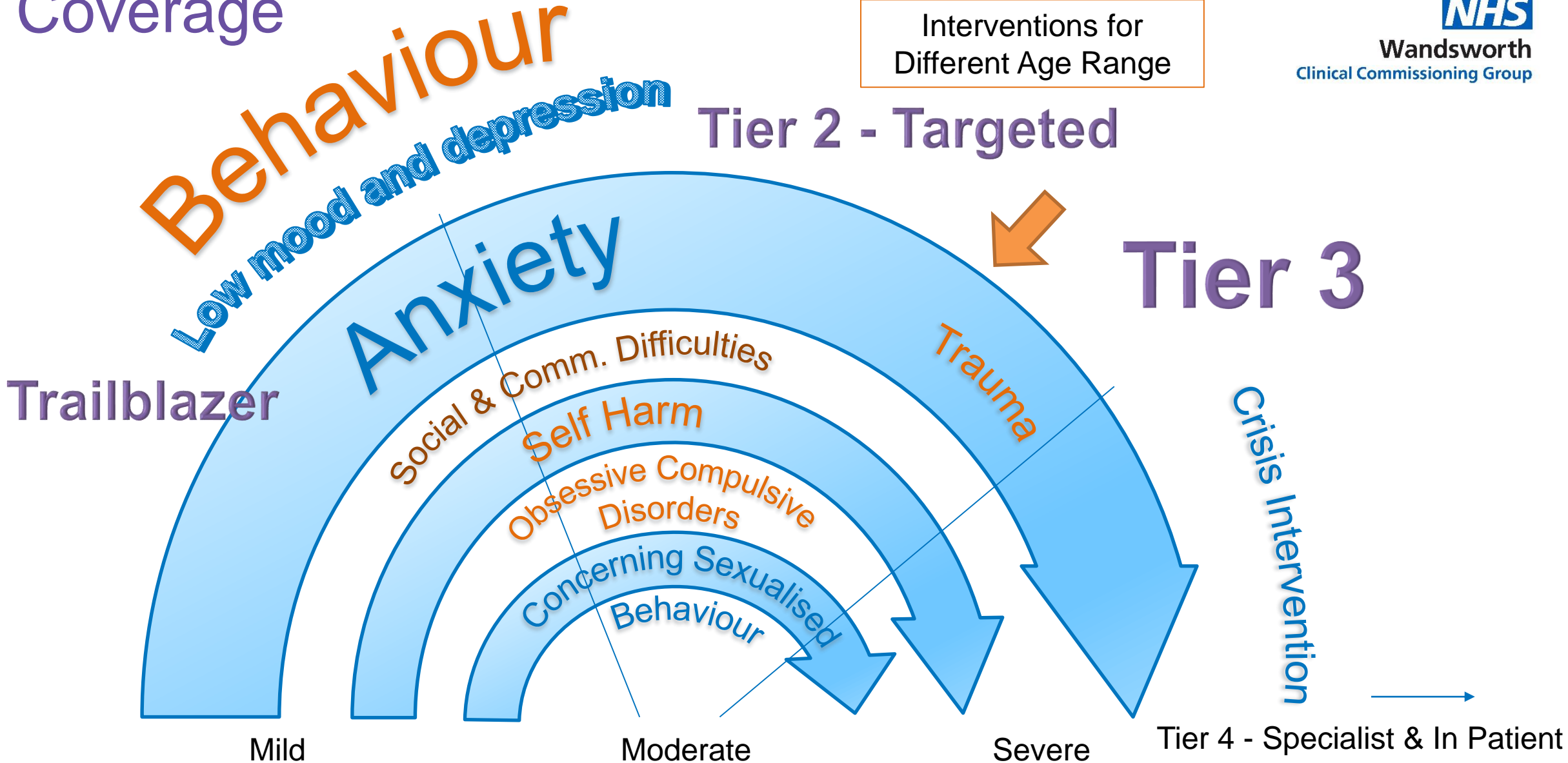
Performance of Key Services - Waits

- **Assessment by Neuro-Development (ND) Service**
 - local stretched target of 12 weeks, small number over 18 weeks (closely monitored on a monthly basis)
 - compared to 799 days in Berkshire, 535 days in South West Yorkshire and 637 days in North Staffs. (actual completion of diagnosis can take even longer)
- **Referral into Tier 2 Services (including Place2Be therapy in Primary Schools and Catch 22 in Secondary Schools, IIT in Social Care and YOT Team)**
 - treatment within 14 days
- **Streamlined referral with Courts and Custody Suite staff**
 - referrals assessed by YOT Clinical Team within 5 days (following referral by adult MH colleagues)
- **CAMHS Learning Disability (LD) Service**
 - cases received within 8 weeks (monitored 'risk register') – crisis patients seen without delay
- **24 Hour Psychiatric Liaison into A&E (including Early Intervention with Psychosis)**
 - four hour wait (A&E waiting time target) – Response time of 2 hours – CAMHS emergency target of 24 hours.
- **Adolescent Outreach Team**
 - no waiting time



Coverage

Interventions for
Different Age Range



Wandsworth CCG Leading Co-Production

- Young people designed and created a new map of CAMHS of services, which is going out to all schools and LA teams
- More than **400** young people attended the BAME MH Conference and have helped develop a new community project for vulnerable BAME young residents
- Wandsworth is leading the Participation Manager post and systematising co-production across SW London
- Wandsworth has involved young people in creating a young person friendly
- Local Transformation Plan, praised by NHS England as good practice





Wandsworth

Mental Health Services

For young people aged 0 - 18



Key

- Getting Advice and Support
- Getting Help
- Getting Further Support
- Parks/Green spaces
- St Georges hospital
- Roehampton University
- Children's Centre
- Secondary Schools
- Secondary Schools - Catch 22 Counselling
- Primary Schools - Place2Be Counselling





Wandsworth

Mental Health Services

For young people aged 0 - 18



Key

- | | |
|------------------------------|--|
| ● Getting Advice and Support | ■ Children's Centre |
| ● Getting Help | ★ Secondary Schools |
| ● Getting Further Support | ★ Secondary Schools - Catch 22 Counselling |
| ■ Parks/Green spaces | ★ Primary Schools - Place2Be Counselling |
| ★ St Georges hospital | |
| ● Roehampton University | |

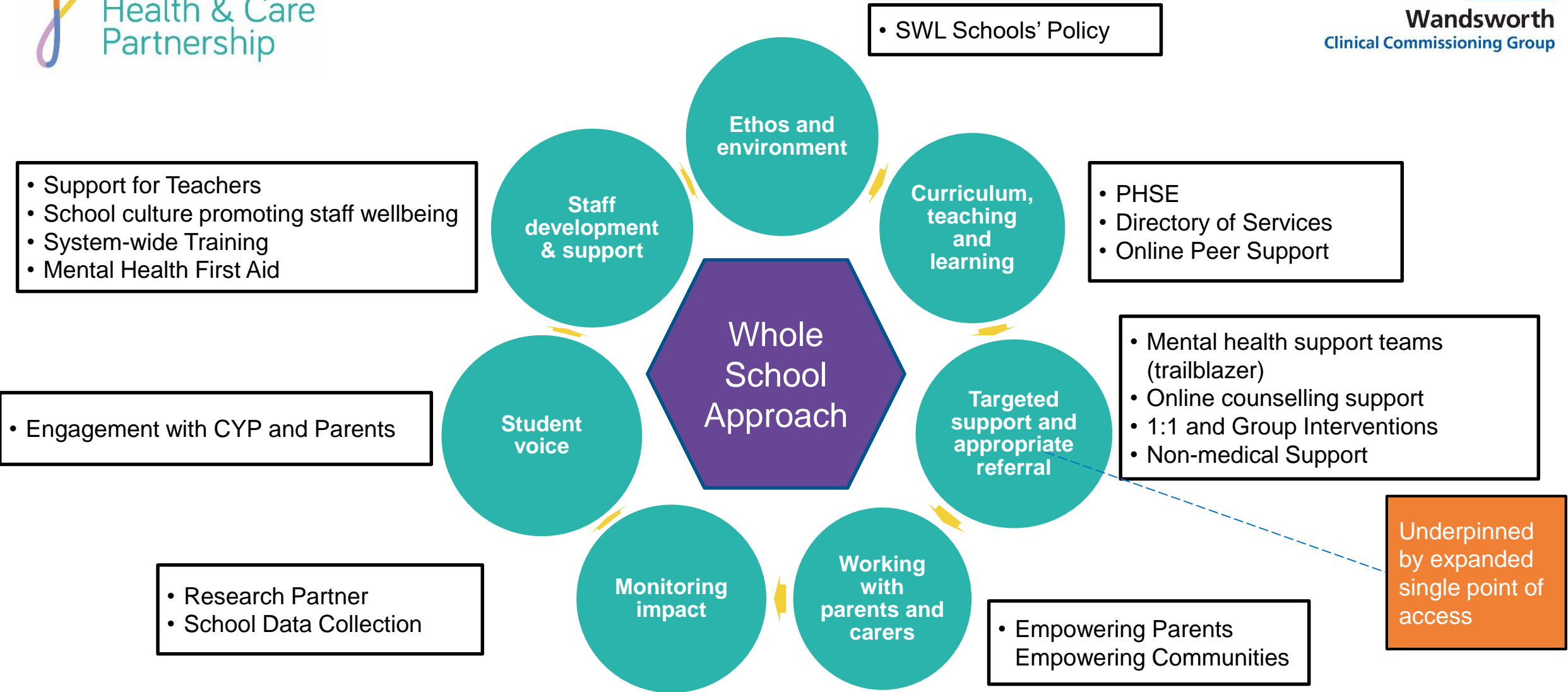


MH in Schools Trailblazer

Ultimately we expect there will be four Mental Health Support Teams (MHSTs):

- Wandsworth Town, Battersea, Tooting and Roehampton/ Putney
- 500 children/ young people per 8000 school population receive treatment
- State schools and independent/ private schools
- Over 100 schools in Wandsworth, 90 have expressed an interest in participating
- Children/ yp that live and that attend school within the borough
- Supplemented by existing Wandsworth LTP services and IAPT Programmes
- Success in three bids – Southfields, Battersea and South Thames College





Waiting Time Pilot

- 96 children to benefit
- Arts psychotherapy – particularly appropriate for primary age children
- **Challenging behaviour where parenting is not obviously the difficulty:**
 - **ASD/ SCD**
 - **Trauma**
- Family therapy
- Dramatherapy
- Play therapy
- Minimum of 8 sessions (sometimes 16 sessions)

BAME Mental Health – Wandsworth Context

In what ways is Wandsworth better and in what ways is Wandsworth worse in terms of equalities?

Initial look:

- better take up of CAMHS Tier 2 / Early Intervention Services and prevention by BAME young people, compared to other areas
- 68% in Primary Schools, compared with school population of 45%.

This is because of provision:

- embedded in schools, PRUs, social care teams, YOT and in community locations.

Initial negatives:

- lower proportion of referrals accepted of BAME young people for SPA assessment, lower proportion of BAME young people referred that are offered treatment and higher DNA rate of BAME young people in CAMHS

BAME Mental Health – Pilot Community Project

- CCG is funding for this pilot project led by WCEN, Spring of 2019
- Arts therapies and creative activities
- Delivered by youth workers and arts psychotherapist - involve MH Trust – supervision and shaping
- Include work around heritage and identities.

Department of Health – 3 Year Programme

- scale up these new models of working with BAME young people

Also, commissioning new technology, to offer more opportunities for engagement and to improve accessibility.





TEENAGE MENTAL HELP

Tier 4 Services

AAOT

Provide a range of treatment and risk management to YP at risk of admission

- Support YP on discharge

Aquarius Ward

Specialist CAMHS inpatient unit

Day patient service

N&S CAMHS

National Specialist Teams

Adolescent at Risk

DBT

OCD