

Establishing and Implementing a Local Suicide Prevention Plan

Graeme Markwell
Senior Public Health Lead

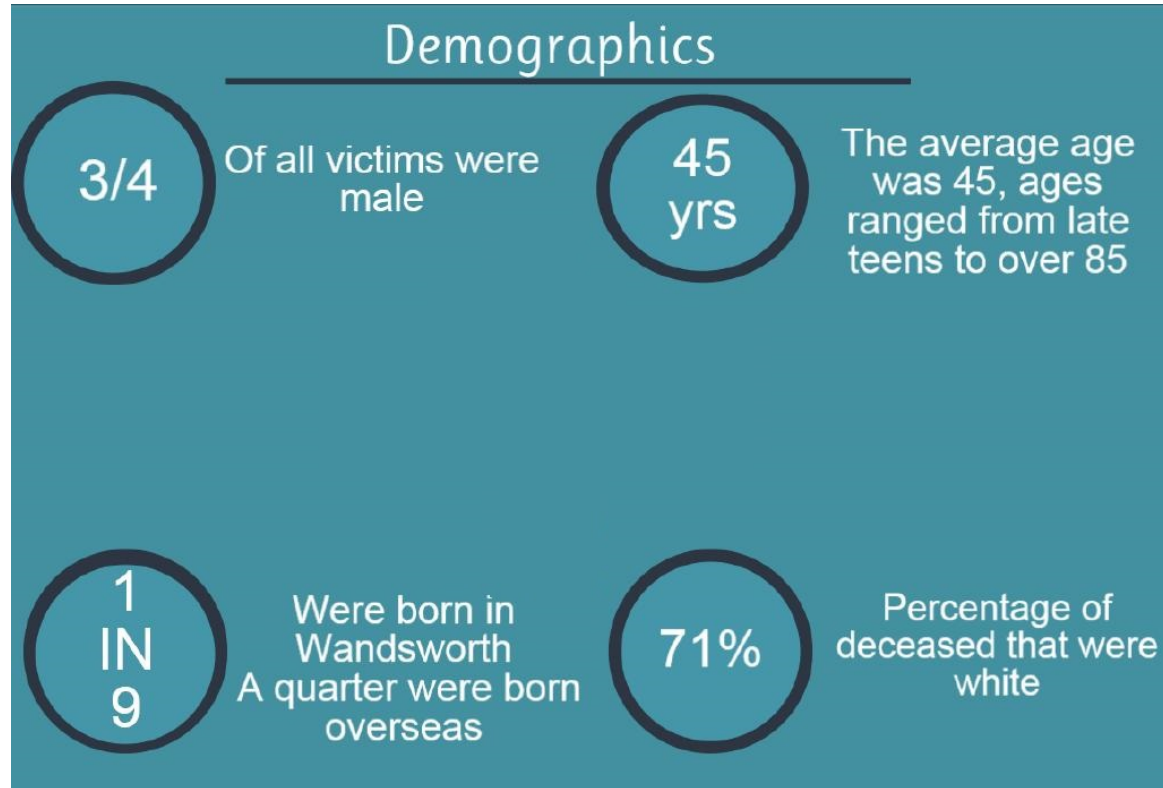


Wandsworth Suicide Prevention Group

- Formed 2014
- Health and Well-being Board
- Multi-agency 30+ members
- Strategy: Suicide is Preventable



Suicide Audit 2009 - 2014



Suicide Audit 2009 - 2014

Social isolation

Nearly half of all
those that died by
suicide lived alone

One fifth reported limited or no support from family or friends
83% were single, divorced, widowed or separated



Strategic Objectives

1. Understand local need
2. Improve access to services
3. Improve clinical care
4. Improve access to information
5. Challenge stigma and discrimination



Influence Commissioning

- Talking Therapies
- Primary Care Plus
- Dual-diagnosis Pathway
- Urgent Care Pathway



Suicide Risk and Safety Planning

- Suicide Awareness
- Suicide Responses
- Direct to Participant
- Train the Trainer



Developing an Effective Plan

Consider...

- Governance
- Intelligence
- Influence
- Persistence



Thank you

For further information contact:

gmarkwell@wandsworth.gov.uk

